

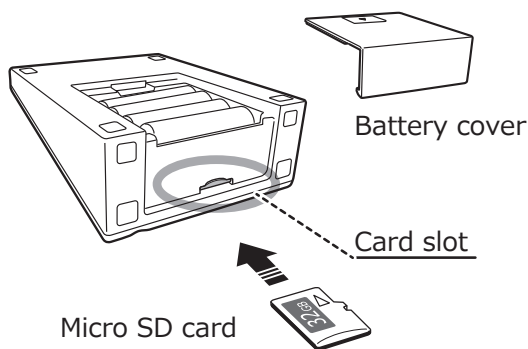
Read the Safety Precautions and the User's Manual carefully before use.

- Reproduction of this manual in whole or in part is strictly prohibited.

Purchase Micro SD card and batteries separately.

Memos created using this product can be exported or imported by using a Micro SD card.

Inserting / removing the Micro SD card (separately sold)



Inserting

1. Open the battery cover.
2. Insert the Micro SD card into the slot as shown in the figure. Fully insert the card, and it will lock into place.
3. Close the battery cover.

Note: Insert the Micro SD card with the correct orientation until it locks into place.

Note: For a list of compatible Micro SD cards, refer to the following website.

http://kingjim.jp/kakumiru_microSD/

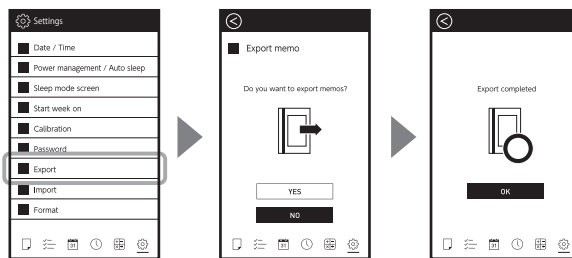
Removing

Push the Micro SD card inwards until it clicks to unlock it, then remove it.

Exporting memos

Insert a Micro SD card and use the following procedures to export the data.

1. Tap the setting (⚙️) icon.
2. Tap "Export".
3. Tap "Yes" to export. "Export completed" will be displayed upon successful completion.
4. Tap "OK" to close.



"kakumiru_XXXXXX" folder will be generated (XXXXXX = year + date) with the data stored within.

Note: All memo data in the device will be exported. You can not export to-do lists.

Note: The memo data is saved as bitmap (.bmp) files (EM10_01 to EM10_99) and can be viewed on a PC. To view the files on a PC, insert the Micro SD card into a card slot on the PC.

Importing memos

Preparing the data

1. Use a PC to create a folder on the Micro SD card called "kakumiru_import".
2. Place bitmap files (.bmp) from a previous exportation (named "EM10_01 to EM10_99") into the folder created in step 1.
3. Remove the Micro SD card from the PC and insert it into the device.

Note: The bitmap files (.bmp) must be monochrome with a 648 x 480 resolution.

Importing memos

1. Tap the setting (⚙️) icon.
 2. Tap "Import".
 3. Tap "Yes" to import. "Import completed" will be displayed upon successful completion.
 4. Tap "OK" to close.
- The data will be added to the last page of the memo.

Note: Data will be imported in order of filename. No existing data will be overwritten.

